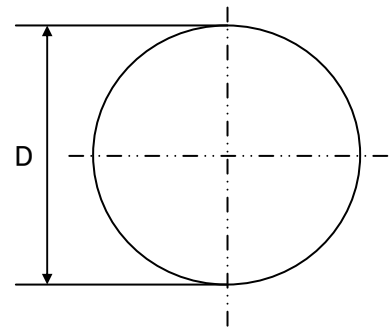
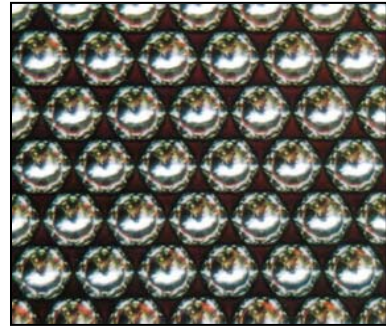


直径0.3~250mm
GCr15・(SUJ2相当品)



直径		重量 Weight 1000items/kg
D		
mm	inch	
0.3		0.00011
0.4		0.00026
0.5		0.00051
0.6		0.00080
0.7		0.00141
0.794	1/32	0.0020
0.8		0.0021
1		0.0041
1.2		0.0071
1.5		0.0139
1.588	1/16	0.0160
2		0.0326
2.381	3/32	0.0550
2.5		0.0420
3		0.1100
3.175	1/8	0.1320
3.5		0.1770
3.969	5/32	0.2570
4		0.2630
4.5		0.3740
4.763	3/16	0.4460
5		0.5140
5.5		0.6790
5.556	7/32	0.7020
5.953	15/64	0.8600
6		0.8820
6.35	1/4	1.0300
6.5		1.1300
6.746	17/64	1.2600
7		1.4100
7.144	9/32	1.5600
7.5		1.7340
7.938	5/16	2.0500
8		2.1000

直径		重量 Weight 1000items/kg
D		
mm	inch	
8.5		2.54
8.731	11/32	2.68
9		3.00
9.5		3.50
9.525	3/8	3.55
10		4.10
10.319	13/32	4.43
11		5.50
11.113	7/16	5.64
11.5		6.20
11.509	29/64	6.20
11.906	15/32	6.93
12		7.10
12.303	31/64	7.50
12.7	1/2	8.42
13		8.94
13.494	17/32	10.10
14		11.30
14.288	9/16	12.00
15		13.75
15.081	19/32	14.10
15.875	5/8	16.50
16		16.80
16.669	21/32	19.10
17		19.99
17.463	11/16	21.90
18		23.73
18.256	23/32	25.00
19		28.00
19.05	3/4	28.40
19.844	25/32	32.40
20		32.55
20.638	13/16	36.20
21		37.85

直径		重量 Weight 1000items/kg
D		
mm	inch	
22		43.32
22.225	7/8	45.20
23		50.00
23.019	29/32	50.00
23.813	15/16	55.50
24		56.24
25		64.20
25.4	1	67.40
26		72.70
26.988	17/16	80.80
28		90.80
28.575	9/8	95.50
30		109.90
30.163	19/16	112.80
31.75	5/4	131.90
32		135.00
33.338	21/16	152.00
34		162.00
34.925	11/8	175.00
35		178.34
36		192.00
36.513	23/16	198.10
38		226.00
38.1	3/2	227.30
40		263.00
41.275	13/8	287.10
42		305.00
42.863	17/16	320.40
44.45	7/4	361.00
45		375.00
47.625	15/8	444.00
48		457.45
50		514.00
50.8	2	538.80

直径		重量 Weight 1000items/kg
D		
mm	inch	
55		648.00
60		888.00
65		1128.00
70		1410.00
75		1734.00
80		2104.00
85		2522.80
90		3000.00
95		3522.10
100		4110.00
110		5467.70
120		7100.00
150		13750.00
200		32590.00
250		63450.00